

# Good things come in small packages

AQ1000  
Optical Time Domain Reflectometer



# Empower field technicians to make fast and precise measurements

## At-a-glance

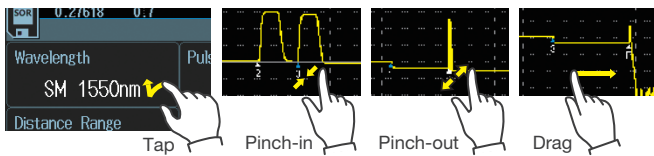
The AQ1000 satisfies test and measurement needs in analyzing access optical networks.

- Wavelengths: 1310 / 1550 nm
- Dynamic ranges: 32 / 30 dB
- Size: 185 mm (W) × 116 mm (H) × 56 mm (D)
- Weight: 660 g

## Multi-touch touchscreen

### Intuitive and responsive

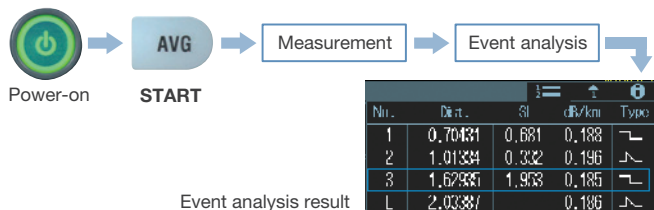
Tap, swipe, pinch or press. the high resolution, responsive 5.0-inch multi-touch capacitive touchscreen and hard-key buttons make OTDR operations simple and intuitive.



## One-button measurement

### Full-Auto

Simply pressing one single button, the AQ1000 initiates an OTDR measurement, detects and comprehensively characterizes network events with PASS/FAIL judgment based on user-defined thresholds. The measurement data can be saved automatically if desired.



### Real-Time

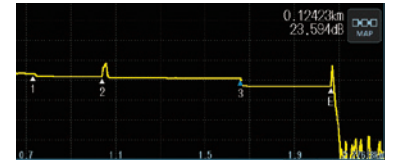
Simple and fast way to observe how the network connection looks like and make a Pass/Fail judgment of the network connection. The markers enables distance and loss measurements.



## OTDR view modes

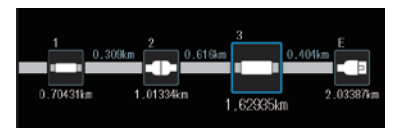
### Trace view

Traditional view with OTDR waveforms and event markers.



### Map view

Simple, icon-based map view for easy interpretation of network events.



## Long battery operation time

### Over 10 hours!

No worrying about running out of battery power during your daily work. The AQ1000's high capacity Li-Ion battery will last for 10 hours under the Telcordia standard conditions.

## Quick boot-up

### Under 10 seconds!

From completely OFF to measurement ready in under 10 seconds!

## Built-in PC and LS, and VLS

### Power checker (PC)

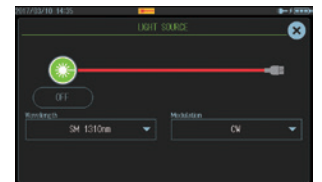
Measures and displays optical power of incoming light for testing network performance.



Power checker (PC)

### Light source (LS)

Outputs a stable, continuous wave/modulated light for measuring end-to-end attenuation accurately when paired with an optical power sensor.

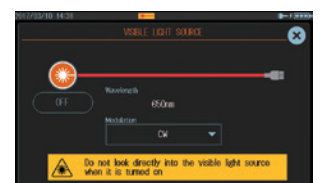


Light source (LS)

### Visible light source (VLS)

Outputs red light for checking continuity of launch fibers or short fiber trunks. Breaks and bending in fiber can be identified visually.

(VLS option is required.)



Visible light source (VLS)

## Data handling features

### Direct data saving

Simply pressing “Direct save” icon, measured data can be saved in SOR or PDF format according to users’ prior selection.



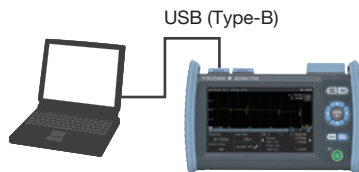
### PDF reporting

Built-in post-processing software for generating OTDR reports in PDF format. Flexible configuration of report template to meet users’ report requirements.



### Data Transfer

Data files or PDF report files that are stored in the AQ1000 can easily be transferred to a PC through a USB connection.



## Wireless LAN (soon-to-be-released)

The AQ1000 is capable of data transfer and remote control in cooperation with wireless LAN capable devices.



Wireless LAN

### Wireless data transfer

The AQ1000’s data files can be transferred to a smartphone or tablet using the OTDR data transporter, or to PC using the OTDR Remote Controller software.

### Remote control

The AQ1000 can be controlled remotely by a smartphone or tablet using a web browser and by a PC using a web browser or the OTDR remote controller.

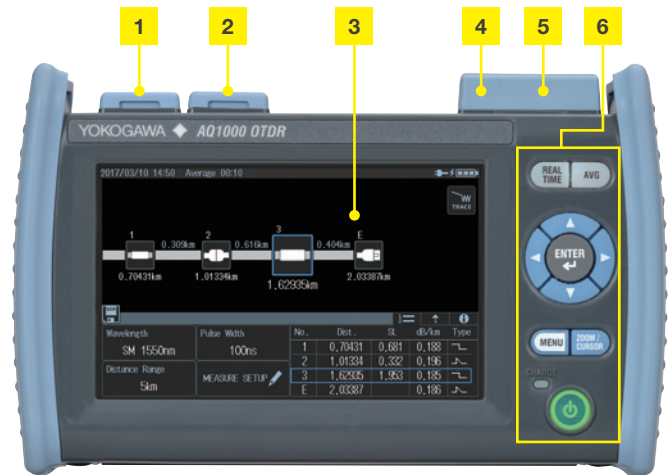
Note.

/WLN option is required. Please consult with our sales representatives for availability in your country.

The OTDR Data Transporter and the OTDR Remote Controller are a free application software.

## Interfaces

- 1 USB port (Type micro B)
- 2 USB port (Type A)
- 3 5.0-inch color LCD with capacitive touch-screen
- 4 VLS port (option)
- 5 OTDR port
- 6 Keys



## USB power feeding

USB port is used for charging the battery of AQ1000. No need to carry a bulky AC adapter anymore.

Note.

A USB power adapter is not included. Please consult with our sales representatives for Yokogawa approved USB power adapters.



## Multi language

Selection of display languages to assist users in operating the AQ1000 in their native language.

## Measurement functions

- Distance measurement
- Loss measurement
- Return loss measurement (Total/Section)
- Auto event search
- Pass/Fail judgment

# Major specifications

## OTDR

| Items                                     | Specifications  |
|---|---|
| Wavelength (nm) <sup>4</sup>              | 1310 ±20/1550 ±20   |
| Applicable fiber                          | SM (ITU-T G.652)  |
| Distance range (km)                       | 0.2, 0.5, 1, 2, 5, 10, 20, 30, 50, 100, 200, 256                            |
| Pulse width (ns)                          | 3, 10, 20, 30, 50, 100, 200, 300, 500, 1000, 2000, 5000, 10000, 20000       |
| Sampling resolution                       | min. 5 cm   |
| Number of sample points                   | max. 256000   |
| Distance measurement accuracy (m)         | ±(1 m + Measurement distance × 2 × 10 <sup>-5</sup> ±1 sampling resolution) |
| Event dead zone (m) <sup>1</sup>          | ≤ 0.8   |
| Attenuation dead zone (m) <sup>2, 4</sup> | 4/5   |
| Dynamic range (dB) <sup>3, 4</sup>        | 32/30   |
| Loss measurement accuracy                 | ±0.03 dB/dB   |
| Reflection accuracy                       | ±2 dB   |
| Laser class                               | Class 1M  |

<sup>1</sup>: Pulse width = 3 ns, Return loss ≥ 55 dB, at a 1.5 dB or less point from an unsaturated peak level. <sup>2</sup>: Pulse width = 10 ns, Return loss ≥ 55 dB, at a point where the backscatter level is within ±0.5 dB of the normal level. <sup>3</sup>: Pulse width = 10000 ns, Measurement time = 3 minutes, Sampling resolution = 8 m, SNR = 1. <sup>4</sup>: typical

## General specifications

| Items                    | Specifications   |   |
|--------------------------|--|---|
| Display*                 | 5.0 inch color TFT LCD WVGA (Capacitive touchscreen) Resolution: 800 × 480 pixel   |   |
| External interfaces      | USB2.0 × 2<br>Type A × 1: Host, Type micro B × 1: USB mass storage devices, DC power supply<br>Wireless LAN (WLAN option): IEEE802.11b/g/n |   |
| Dimensions               | 185 mm (W) × 116 mm (H) × 56 mm (D) (excluding projections)  |   |
| Weight                   | Approx. 660 g  |   |
| Environmental conditions | Temperature  | Operating: -10°C to 50°C, (10 to 35°C during charging, excluding a USB power adapter)<br>Storage: -20°C to 60°C |
|                          | Humidity   | 5 to 90%RH (No condensation)  |
|                          | Altitude   | 4000 m or less  |
| Power requirements       | DC 5 V±10%, max. 1.5 A   |   |
| Battery                  | Type   | Lithium ion polymer   |
|                          | Operating time   | 10 hours or more (Telcordia GR-196-CORE Issue 2, September 2010)  |
|                          | Recharge time  | 5 hours (typical)   |
| Safety standard          | EN61010-1  |   |
| Laser safety             | IEC/EN 60825-1:2007, GB7247.1-2012, FDA 21CFR1040.10 and 11  |   |
| EMC                      | Emission   | EN 61326-1 Class A, EN 55011 Class A Group1   |
|                          | Immunity   | EN 61326-1 Table2   |
| Wireless                 | Wireless LAN (option)  | EN300 328 V2.1.1, EN301 489-1 and 17  |

\*The LCD may contain some pixels that are always ON or OFF (0.002% or fewer of all displayed pixels including RGB), but this is not indicative of a general malfunction.

### Yokogawa's approach to preserving the global environment

- Yokogawa's electrical products are developed and produced in facilities that have received ISO14001 approval.
- In order to protect the global environment, Yokogawa's electrical products are designed in accordance with Yokogawa's Environmentally Friendly Product Design Guidelines and Product Design Assessment Criteria.



Complies with CE (EN61010 and EN61326) and FCC (FCC Part 15) for the following countries: USA, Canada, Mexico, Brazil, India, China, Korea, Japan, Australia, New Zealand, South Africa, Taiwan, Hong Kong, Singapore, Malaysia, Philippines, Thailand, Vietnam, Indonesia, and others.

## Power checker function

| Items                      | Specifications           |
|----------------------------|--------------------------|
| Wavelength setting (nm)    | 1310/1490/1550/1625/1650 |
| Measurement range (dBm)    | -50 to -5                |
| Measurement accuracy (dB)* | ±0.5                     |

\*CW, 1310 nm (with a spectral width of 10 nm or less), Optical input power 100 μW (-10 dBm), SM fiber (ITU-T G.652) with FC/PC connector, Wavelength setting: Measured wavelength ±0.5 nm, Excluding a secular change of equipment. (add 1% one year after calibration.)

## Stabilized light source function

| Items                         | Specifications           |
|-------------------------------|--------------------------|
| Wavelength (nm)               | 1310 ±25/1550 ±25        |
| Optical output level          | -3 dBm ±1 dB             |
| Output power stability (dB) * | ±0.05                    |
| Modulation mode               | CW, 270 Hz, 1 kHz, 2 kHz |
| Laser class                   | Class 1M                 |

\*for 5 minutes at a constant ambient temperature within 23°C ±2°C.

## Visible light source function (VLS option)

| Items                | Specifications        |
|----------------------|-----------------------|
| Wavelength (nm)      | 650 ±20               |
| Optical output level | -3 dBm or more (Peak) |
| Modulation mode      | CW, 2 Hz              |
| Laser class          | Class 3R              |

Note.

All the specifications are valid at 23°C ±2°C and after a warming up for 5 minutes or more, unless otherwise stated.

## Model and suffix code

| Model  | Suffix codes         | Descriptions   |
|--------|----------------------|--|
| AQ1000 |                      | AQ1000 OTDR  |
|        | Optical connector    | -USC Universal Adapter (SC)<br>-UFC Universal Adapter (FC) |
|        | Visible light source | /VLS Visible Light Source                                  |
|        | Wireless LAN*        | /WLN Wireless LAN (soon to be released)                    |

\*The use of wireless LAN is subject to the regulation of each country. For more detail, please consult with our sales representatives.

## Accessories (Sold separately)

| Names             | Models     | Descriptions   |
|-------------------|------------|--|
| Universal adapter | 735482-FCC | for OTDR port (FC)   |
|                   | 735482-SCC | for OTDR port (SC)   |
| USB cable         | A1590WL    | for DC power supply, Length 1 m, USB Type A - USB Type micro B |
| Strap             | B8105EP    | —  |

## Application software

| Model    | Suffix codes | Descriptions                                   |
|----------|--------------|--|
| 735070   |              | AQ7932 Emulation Software (Ver. 6.01 or later) |
| Language | -EN          | English  |
|          | -CH          | Chinese  |
|          | -KO          | Korean   |

### NOTICE

- Before operating the product, read the user's manual thoroughly for proper and safe operation.
- Company names and product names appearing in this document are the registered trademarks of their respective companies.
- "Typical" or "Typ." in this document means "Typical value", which is for reference, not guaranteed specification.



# YOKOGAWA

YOKOGAWA METERS & INSTRUMENTS CORPORATION

Global Sales Dept. /Phone: +81-422-52-6237 E-mail: tm@cs.jp.yokogawa.com  
Facsimile: +81-422-52-6462

YOKOGAWA CORPORATION OF AMERICA

YOKOGAWA EUROPE B.V.

YOKOGAWA SHANGHAI TRADING CO., LTD.

YOKOGAWA ELECTRIC KOREA CO., LTD.

YOKOGAWA ENGINEERING ASIA PTE. LTD.

YOKOGAWA INDIA LTD.

YOKOGAWA ELECTRIC CIS LTD.

YOKOGAWA AMERICA DO SUL LTDA.

YOKOGAWA MIDDLE EAST & AFRICA B.S.C(c)

Phone: +31-88-4641000  
Phone: +86-21-6239-6363  
Phone: +82-2-2628-3810  
Phone: +65-6241-9933  
Phone: +91-80-4158-6396  
Phone: +7-495-737-78-68  
Phone: +55-11-5681-2400  
Phone: +973-17-358100

E-mail: tmi@us.yokogawa.com  
E-mail: tmi@nl.yokogawa.com  
E-mail: tech@ysh.com.cn  
E-mail: TMI@sg.yokogawa.com  
E-mail: tmi@in.yokogawa.com  
E-mail: info@ru.yokogawa.com  
E-mail: help.ymatmi@bh.yokogawa.com

Facsimile: +86-21-6880-4987  
Facsimile: +82-2-2628-3899  
Facsimile: +65-6241-9919  
Facsimile: +91-80-2852-1442  
Facsimile: +7-495-737-78-69

Facsimile: +973-17-336100

http://tmi.yokogawa.com/

YMI-KS-MI-SE04

Subject to Change without notice.

Copyright © 2017, Yokogawa Meters & Instruments Corporation

[Ed: 01/b]

Printed in Japan, 703(KP)