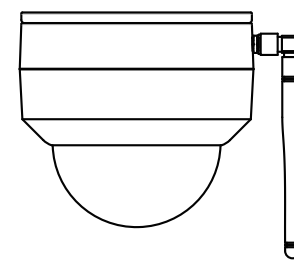


# Quick Setup Guide

Outdoor IP Security Camera



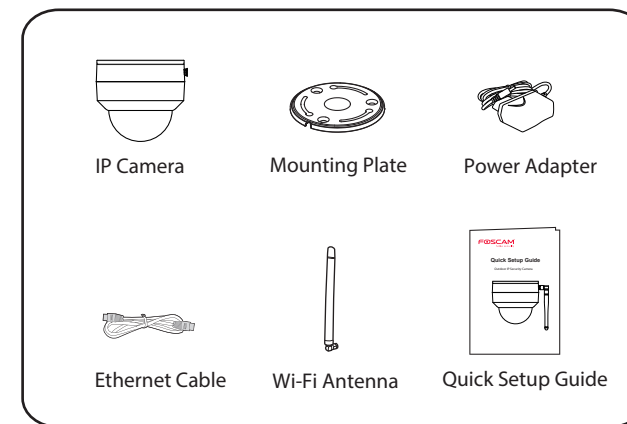
To view this guide in other languages (e.g. Nederlands, Deutsch, Français, Español), and for detailed manuals, tools, etc., please visit [foscam.com/downloads](http://foscam.com/downloads).

V1.2  
305503000465

## Setting Up Your Foscam Security Camera

### 1 Getting Started

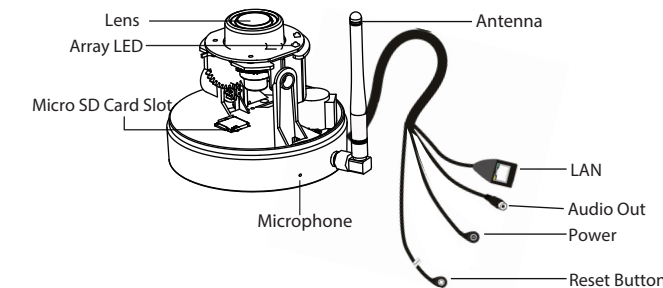
#### Package Contents



#### Security Tips

- Please change the camera's password regularly, using a combination of numbers, letters and special characters.
- We recommend that you regularly update your camera with the latest available software and firmware to ensure the best experience with your camera.

### 2 Physical Description



### 3 Setting Up Your Camera: Wired Connection via the Foscam App (Recommended)

#### Before You Get Started

Scan the QR code below to download and install the Foscam APP.



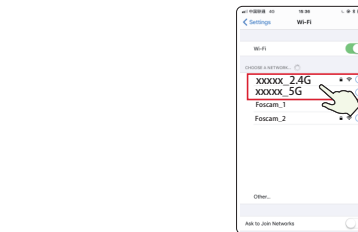
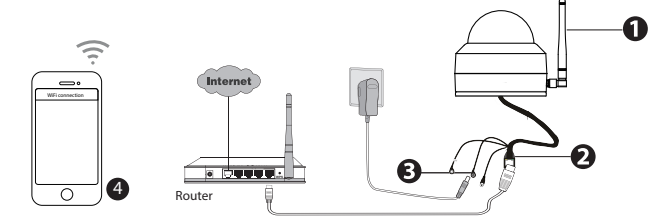
To ensure a smoother video experience on your smart phone, it is recommended that your smart phone meet the following specifications:

- iOS: version 8.1 or higher.
- Android: 4.1 or higher, using a device with a Graphics Processing Unit (GPU).

**Note:** For the best experience, please update the APP to the latest version!

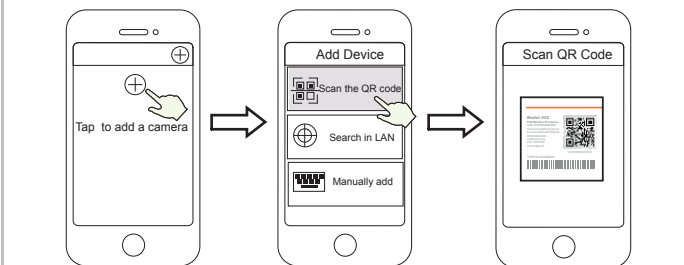
### Wired Connection

1. Please tighten the antenna clockwise and make sure it is in a vertical position.
2. Connect the camera to your router with an Ethernet cable.
3. Plug the power adapter into the camera, and then wait for about 1 minute.
4. Make sure your smart phone is connected to the same WiFi network as the camera.



**Tips:** The camera supports dual-band 2.4GHz and 5GHz WiFi networks, so you can choose the channel with the stronger signal to use. For example, choose your SSID: XXXXX\_2.4G or XXXXX\_5G.

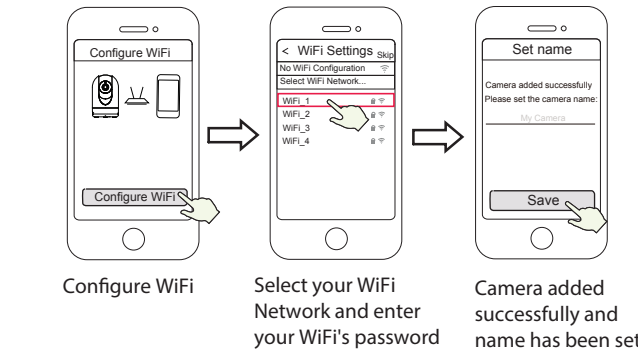
5. Open the foscam APP and please register a Foscam account, or sign in if you have one already.
6. After logging into Foscam APP, select "Tap to add a camera" or "+" icon on the upper right corner, then select "Scan the QR code" and scan the QR code that labeled at the bottom of your camera.



Tap + icon  
Select "Scan the code"  
Scan the QR code which is located at the bottom of your camera.

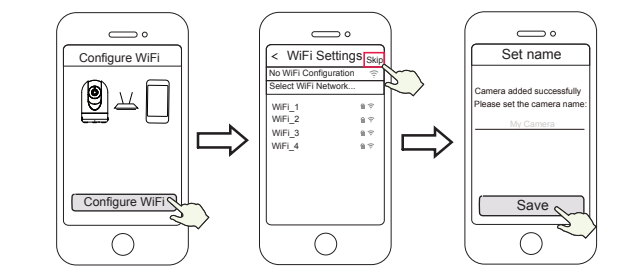
7. There are two options in the following steps, please pay attention to choose the corresponding adding method.

- 7.1 Please wait for a few seconds, you can tap "Configure WiFi" in "Configure WiFi" interface, then select your WiFi network and enter your WiFi's password. After, you can set the camera name and tap "Save" in "Set name" interface.



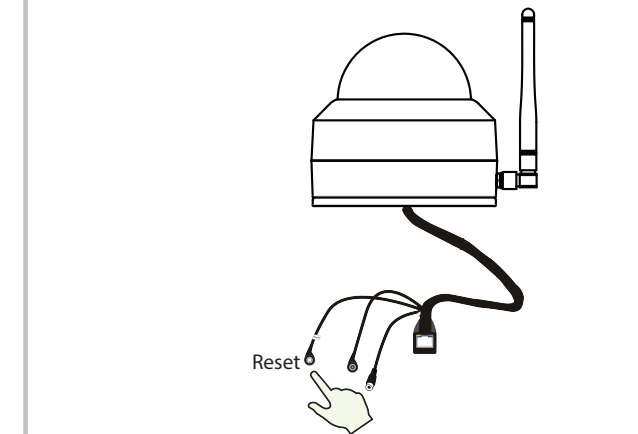
Configure WiFi  
Select your WiFi Network and enter your WiFi's password  
Camera added successfully and name has been set

- 7.2 Please wait for a few seconds, you can tap "Configure WiFi" in "Configure WiFi" interface, then you tap "Skip" in the "WiFi Settings" interface. After, you can set the camera name and tap "Save" in "Set name" interface.

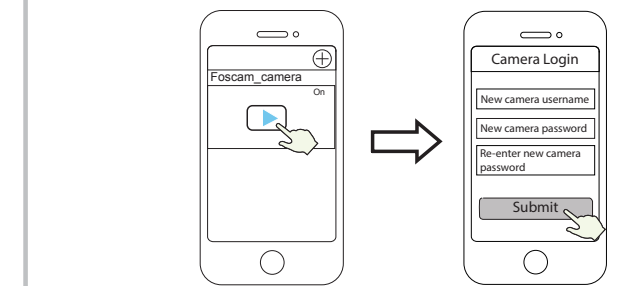


Configure WiFi  
Tap "Skip"  
Camera added successfully and name has been set

**Note:** If the adding process fails, please reset your camera and try adding again according to the above method.



8. Tapping on the play button in the video box will jump to the "Camera Login" setting interface. For your security, please set a new username and password for your camera before viewing live video.



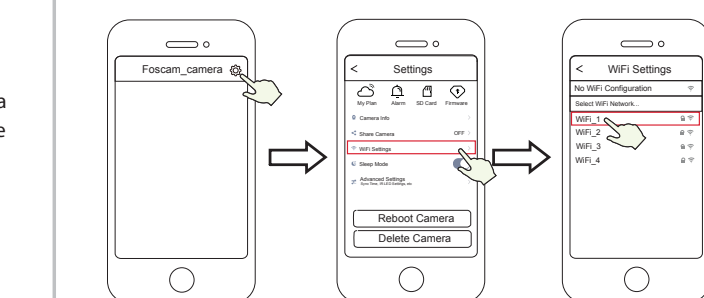
Tap "▶"  
Set a new username and password

9. After completing the above steps, you can begin using your camera.

**Note:** If you choose installation **step 7.2**, please refer to the following steps for configuring WiFi. After setting your WiFi, you can unplug your network cable and the camera works normally.

### Configure WiFi

If you selected "Skip" in **step 7**, click play to enter the camera credentials interface > Tap the "⚙️" button > tap "WiFi Settings" > select your WiFi network and enter your WiFi's password. After setting up successfully, you can view live video without the Ethernet cable.



Tap ⚙️ button  
Select "WiFi Settings"  
Select your WiFi Network and enter your WiFi's password

## 4 Other Ways to Access Your Camera

### ■ Foscam VMS

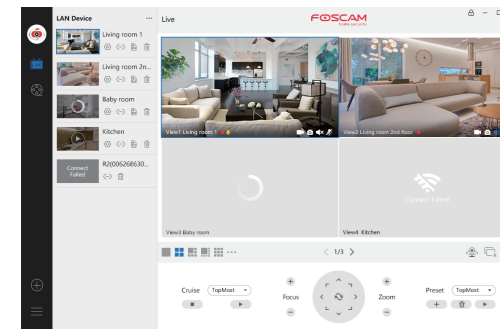
Foscam VMS is a new tool for PCs. It does not require plug-ins and is compatible with Windows & Mac, supporting all Foscam HD cameras and up to 36 cameras at the same time. If you would like to manage multiple cameras, we suggest you install Foscam VMS. You can download the "Foscam VMS" Windows version from [foscam.com/vms](http://foscam.com/vms), and can download the "Foscam VMS" Mac version from the APP store: <https://apps.apple.com/cn/app/foscamvms/id1521202507?mt=12>

**Note:** For the best experience, please update Foscam VMS to the latest version!

### ■ Add the IP Camera

1. Run Foscam VMS, then create a local administrator account and login.
2. Tap the "+" icon on the Foscam VMS and follow the setup wizard to add your camera.

Please visit [foscam.com/downloads](http://foscam.com/downloads) to view the user manual and for additional detailed steps.



### ■ Foscam Cloud Service

You can access the camera via the Foscam Cloud website: <https://www.myfoscam.com>

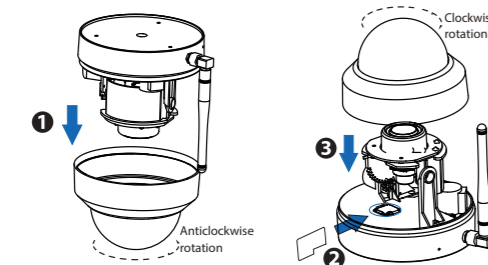
Some benefits of viewing your camera in the cloud:

- It's simple and convenient to remotely access and manage all your WiFi security cameras.
- Enjoy the latest features first through Foscam Cloud including cloud storage and more.
- Getting started is fast—if you have already registered an account in the Foscam App, you can directly use the same login credentials for Foscam Cloud.

## 5 Hardware Installation

### SD Card Installation (Optional)

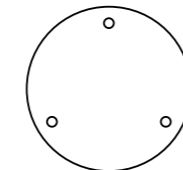
1. Loosen the cover of the device by rotating it counter-clockwise, and remove the cover.
2. Insert a micro SD into the SD card slot.



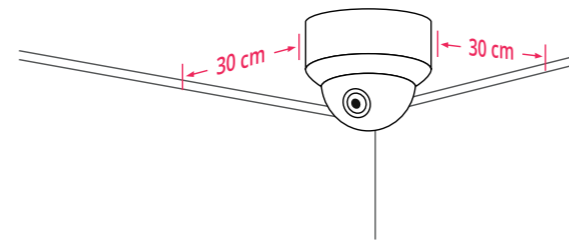
3. Fasten the cover by rotating it clockwise. If you don't want to use an SD card for storage, you can choose not to install the SD card (in that case, steps 1-3 can be ignored and you can begin installation with step 4 below).

### Camera Mounting

4. Install the mounting plate in the area to be monitored.

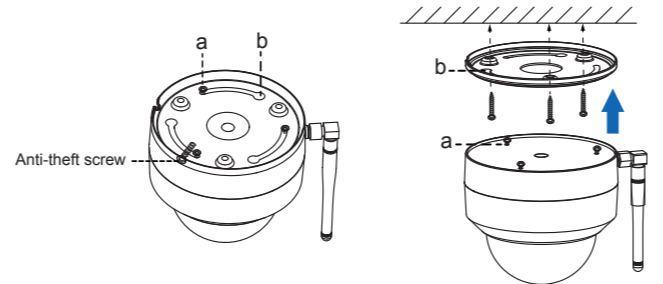


**Note:** for the best visuals, we suggest mounting the camera in a position that is at least 30cm (11.8in) away from the left and right walls.



5. Loosen the anti-theft screw on the mounting plate, and then rotate it counter-clockwise until points a and b are aligned. This allows for the mounting plate to be removed.
6. Install the mounting plate on a wall or ceiling with the provided fixing screws.

7. Align points a and b to insert the camera base into the mounting plate. Rotate so that points a and b are no longer aligned: this attaches the camera securely to the base. After installing the camera on the mounting plate, then tighten the screw on the mounting plate to prevent theft.



### 8. Wiring

- a. Pass the wire out from the gap of the mounting plate.
- b. Connect the camera to your LAN (Local Area Network or Internet router) via Ethernet cable.
- c. Power on the device.

9. Control the angle of the lens in the Foscam app.

## 6 Important Notice

### ■ Camera Username & Password

The camera username & password are used to access and manage your camera. Having a strong password can significantly improve the security of your camera.

If you have forgotten either of them, please press the "Reset" button and hold it for more than 10 seconds while the camera is powered on. After release the button. The camera will automatically reboot and the default settings will be restored.

You can then reconnect the camera by following this Quick Setup Guide.

### ■ Foscam Cloud Service Account Username & Password

Your Foscam Cloud service account and password may be used to access both the Foscam App and the Foscam Cloud service website. Therefore, you can register your account username & password on either one.

### ■ Storage Media

Your camera supports cloud, NVR (Network Video Recorder), and Micro SD card (only supports FAT-32 format) storage formats. If you wish to record and play back large amounts of video, we recommend using a Foscam NVR device as well.

### ■ Firmware Upgrade

You can upgrade the firmware of your camera with the Foscam App by using the new "One-Key Online Upgrade" feature (Open the Foscam App and Login to the camera, select **Settings > Firmware Upgrade**).

You also can download the latest version to upgrade your camera from our official website [foscam.com/upgrades](http://foscam.com/upgrades).

### ■ Safety Tips

- Please ensure that the proper power supply is used before using the camera.
- Please install the camera securely using the screws provided.
- Please use this product within the temperature range. When the ambient temperature is too high or too low, it may cause product failure.
- To avoid the risk of fire or electric shock, please keep your camera connectors in a cool, dry place.
- Please keep the camera out of reach of small children.
- This product is not a toy; children should use the product under adult supervision.
- Change your default port to a greater range to help ensure the safety of your connection. How to change the default port: please visit [foscam.com/downloads](http://foscam.com/downloads) to view the user manual.
- Check the logs of your Foscam cameras frequently. Foscam Cameras have embedded logs reminding telling you which IP addresses addresses are accessing the camera.
- The cords on this product are a potential strangulation hazard. For child safety, please keep these cords out of the reach of children.



## 7 Product Performance

WLAN frequency range: 2412MHz - 2472MHz and 5725MHz - 5875MHz  
Maximum transmission power: < 18.5dBm  
Wireless Standard: IEEE802.11b/g/n (2.4GHz)  
IEEE802.11a/n/ac (5GHz)  
Power Supply: DC 12V 2.0A 24W

## 8 Technical Support

If you have problems with your Foscam device, please contact the reseller you purchased from, or you can e-mail the headquarters technical support team: [support@foscam.com](mailto:support@foscam.com)

Your valuable comments and suggestions on improving Foscam products are welcomed!



CE Certificate statement Website:  
<https://www.foscam.com/company/ce-certificate.html>

Exporter and Importer Information Opened to Public:  
<https://www.foscam.com/company/open-information.html>

Manufacturer: Shenzhen Foscam Intelligent Technology Co., Ltd  
Addr: Room 901, Unit B, Building 7, Xingke 1st Street  
Vanke Cloud City Phase 1, Nanshan Dist., Shenzhen, 518055, China

[www.foscam.com](http://www.foscam.com)

Due to product upgrades and other reasons, this guide may be slow to update, resulting in slight inconsistencies with the official website information. Please take the official website ([www.foscam.com](http://www.foscam.com)) information as the current standard.