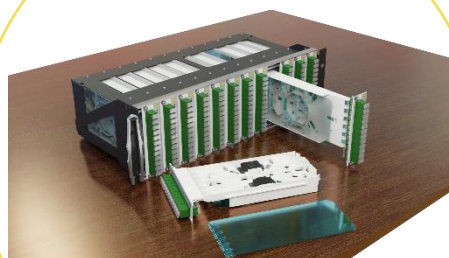


3U SubRack for 19" modules of 12 or 24 SC/APC – 144 FO / 288 FO



3U 19" chassi module designed to receive up to the maximum of 12 modules of 12/24 SC/LC or E2000 terminated optical fibers.

Possibility of setting the depth of the module further back to facilitate the pathway of the front fibers in case the profile of the cabinet front door is too close.

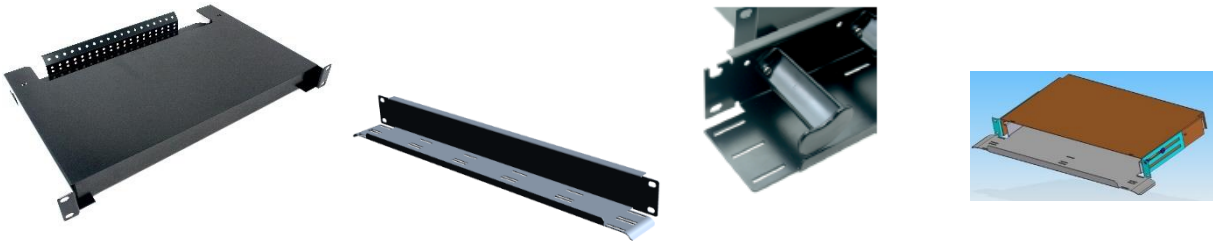
A connection and removal tool for SC connectors can be supplied as an accessory



For integral parts of this SubRack, the following products can be supplied separately:

- 1U 19" rear access cabinet drawer for cable management of excess Loose-Tube or FlexTube.
- 1U 19" front panel for management of fibers coming from modules, available in 2 versions:
 - o Fiber management by means of Velcro
 - o Fiber management by means of plastic guides

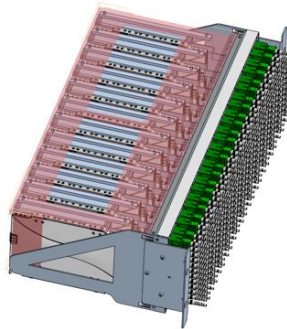
- 1U 19" cabinet drawer for front access of:
 - o 12 or 24 FO Modules with various types of optical connections SC/APC, LC/APC, E2000/APC



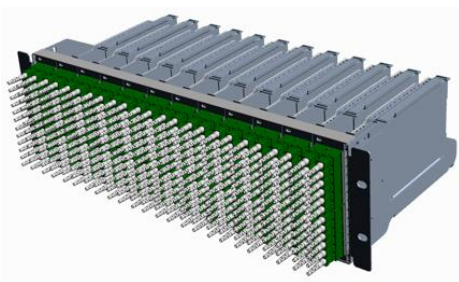
Images of various versions



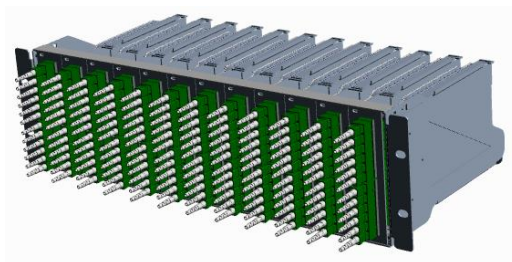
Version without upper protection



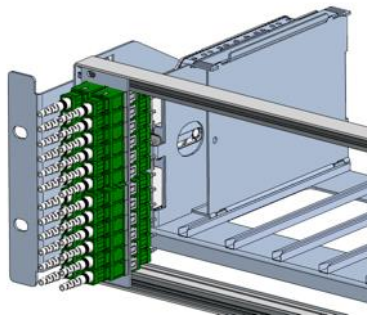
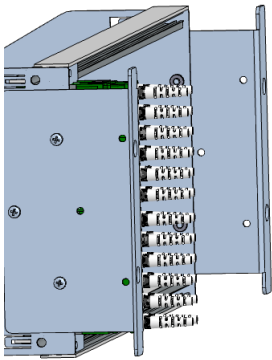
Version with upper protection.



Complete version 144FO SC/APC



Complete version 288FO SC/APC



Structure with depth adjustment

Part Number

GWHD13U-12M288F

GWHD13U-ACE02

GWHD1MOD-ACE01

Description

3U 19" Chassi for 12 Modules GW-HD1_v2

Additional accessory for the protection and guidance of the modules

Connection and removal tool for modules GWHD1 SC/APC

End of Technical Specification

