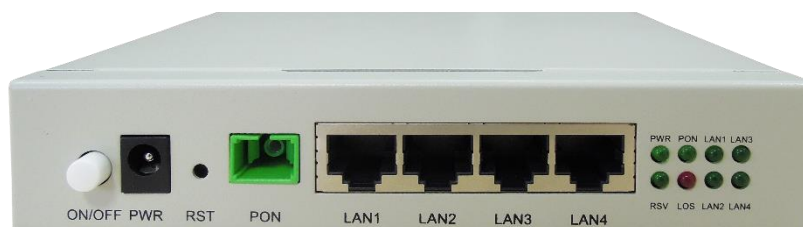


ISCOM5104G-GP-HB

The ISOCM5104G-GP-HB, developed by Raisecom, is a GPON uplink pre-industrial-level 4GE ONU targeted for video monitoring scenarios, such as peace city project and video monitoring in public areas. It adopts the metallic shell, sturdy and durable, featuring high safety protection level, high lightning protection level, thus suitable for outdoor cross connection boxes.

ISCOM5104G-GP-HB



Highlights >>

Pre-industrial-level design

- Adopt a metal shell, be imbedded with a power supply, and feature high safety/lightning protection level, good leakproofness and heat dissipation.
- The operating temperature ranges from -5 to 45°C.
- Feature small size, able to be installed in a cross connection box.
- Arrange the power interface and service interfaces on the same side, facilitating installation and OAM.

Carrier-grade design

- Support GPON G.984.4 or G.988 technical requirements.

Uniform network management and easy OAM

- Support multiple management modes (Web and OAM) to facilitate login and management.
- Support batch configuration, template-based configuration, offline configuration, and plug and play of ONUs, to facilitate service activation.
- Support reporting various alarms (Dying Gasp, optical link diagnosis, loop, and so on.) to facilitate locating and clearing faults.
- Support the Raisecom NView NNM system, which can manage all Raisecom devices and configure all services.

Application >>

International Headquarters

Raisecom Building, East-11, No.10 Xibeiwang East Road,
Haidian District, Beijing, P.R.China, 100193
Tel: +86 10 8288 3305
Fax: +86 10 8288 3056
www.raisecom.com

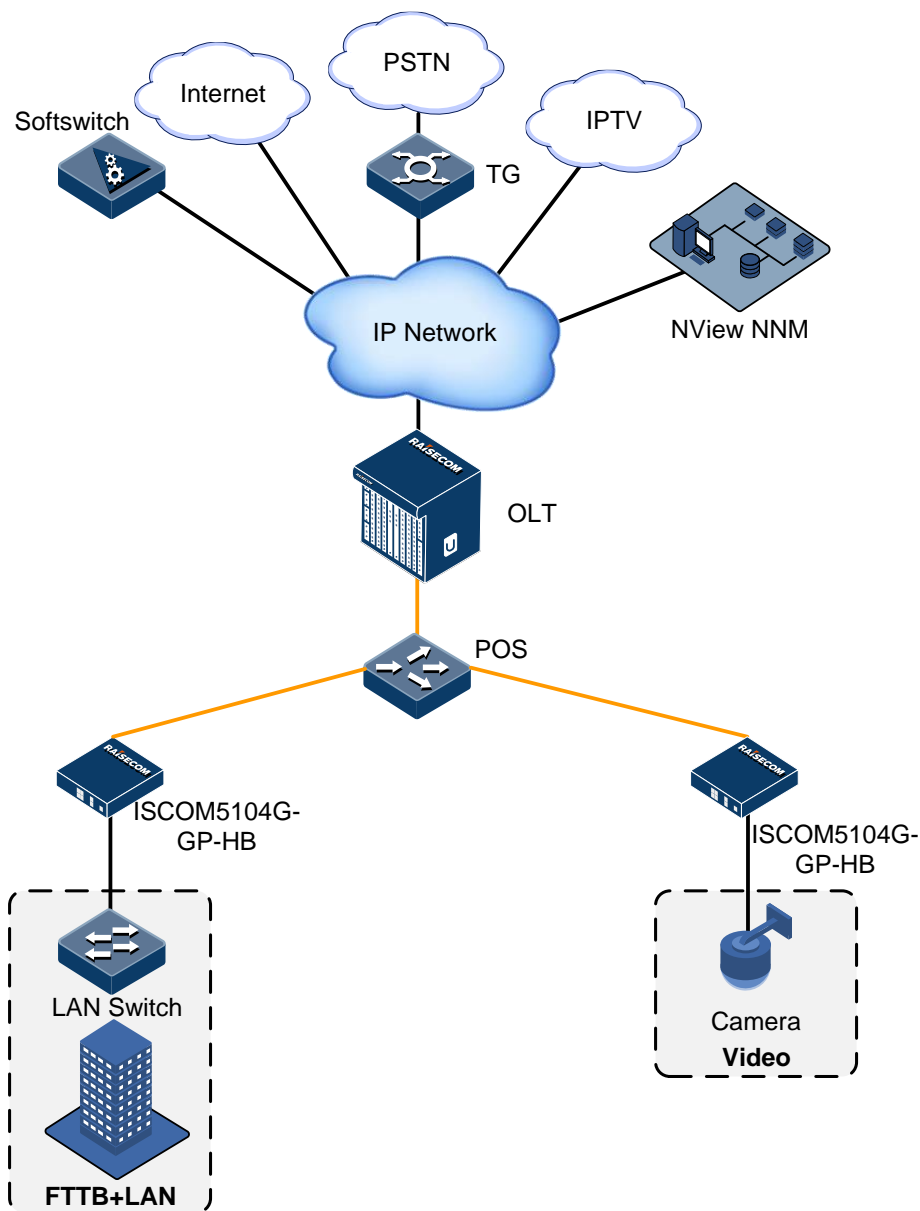
North American Headquarters, Raisecom Inc.

6380 N Eldridge Parkway Houston Texas 77401 USA
Tel: 1-888-816-4808
Email: sales@raisecominc.com

Raisecom Technology Co., Ltd.

Copyright@1999-2020
All rights reserved
Technical information is subjected to
change without notice

Figure 1 ISCOM5104G-GP-HB networking



ISCOM5104G-GP-HB access networking:

The ISCOM5104G-GP-HB can be applied to the PON+LAN scenario and video monitoring network. Its GPON ability enables it to be connected upstream to any EPON or GPON OLT.

Figure 1 shows the PON+LAN networking. The Ethernet interface on the ISCOM5104G-GP-HB can be directly connected to a broadband user or switch in the corridor.

International Headquarters

Raisecom Building, East-11, No.10 Xibeiwang East Road,
Haidian District, Beijing, P.R.China, 100193
Tel: +86 10 8288 3305
Fax: +86 10 8288 3056
www.raisecom.com

North American Headquarters, Raisecom Inc.

6380 N Eldridge Parkway Houston Texas 77401 USA
Tel: 1-888-816-4808
Email: sales@raisecominc.com

Raisecom Technology Co., Ltd.

Copyright@1999-2020
All rights reserved
Technical information is subjected to
change without notice



Key features >>

PON	<ul style="list-style-type: none"> ● ITU-T G.984.x (1, 2, 3, and 4) and G.988 standards ● 32 T-CONTs and 128 GEMs ● Multiple authentication modes (SN, password, LOID, and so on) for cooperating with the OLT ● DBA for cooperating with the OLT ● Silence, with time of 60s ● AES-128 encryption
Ethernet interface	<ul style="list-style-type: none"> ● 10/100/1000 Mbit/s auto-negotiation, 1000 Mbit/s full duplex mode, flow control, and so on ● Statistics on unicast packets, multicast packets, and broadcast packets on interfaces ● MTU, ranging from 1518 to 2030, being 1518 by default ● Storm control over DLF packets, unknown multicast packets, and broadcast packets based on interface
Loop detection	Supported
MAC address	MAC address learning and aging
VLAN	<ul style="list-style-type: none"> ● IEEE 802.1Q ● CTC VLAN mode (transparent transmission, tag, mapping, and Trunk mode)
Multicast	<ul style="list-style-type: none"> ● IGMP Snooping ● Multicast VLAN ● Multicast immediate leave
Maintenance and management	<ul style="list-style-type: none"> ● OMCI management and configuration, supporting G.984.4/G.988 standards ● OAM management and configuration ● OLT management and local Web management ● Interface Up/Down alarm and Dying Gasp alarm ● Configurable status parameter thresholds of optical modules, able to query current values

Specifications >>

PON interface	GPON: SC/APC
Ethernet interface	Uplink: 1.244 Gbit/s; downlink: 2.488 Gbit/s
Power supply	4GE
Operating conditions	Input: AC 220V: 100–240 VAC, 50/60 Hz
Maximum power consumption	Output: DC 12V, 1A
	Operating temperature: -5 to 45°C
	Operating humidity: 10%–90% (non-condensing)
	< 5 W

Standards and protocols >>

Standards and protocols	OMCI management and configuration, supporting G.984.4/G.988 standards
-------------------------	---

International Headquarters

Raisecom Building, East-11, No.10 Xibeiwang East Road,
Haidian District, Beijing, P.R.China, 100193
Tel: +86 10 8288 3305
Fax: +86 10 8288 3056
www.raisecom.com

North American Headquarters, Raisecom Inc.

6380 N Eldridge Parkway Houston Texas 77401 USA
Tel: 1-888-816-4808
Email: sales@raisecominc.com

Raisecom Technology Co., Ltd.

Copyright@1999-2020
All rights reserved
Technical information is subjected to
change without notice



Raisecom Technology Co., Ltd



Size	150 mm (Length) × 115 mm (Width) ×30 mm (Height)
Dustproof level	IP20
Weight	< 0.5 kg

Ordering information>>

ISCOM5104G-GP-HB-07 (M)	GPON uplink, four 10/100/1000 Mbit/s Ethernet interfaces, with European power adapter
-------------------------	---

International Headquarters

Raisecom Building, East-11, No.10 Xibeiwang East Road,
Haidian District, Beijing, P.R.China, 100193
Tel: +86 10 8288 3305
Fax: +86 10 8288 3056
www.raisecom.com

North American Headquarters, Raisecom Inc.

6380 N Eldridge Parkway Houston Texas 77401 USA
Tel: 1-888-816-4808
Email: sales@raisecominc.com

Raisecom Technology Co., Ltd.

Copyright@1999-2020
All rights reserved
Technical information is subjected to
change without notice