

## Fiber optic distribution box 7.6328/BOX

**Product Information** This 16 slots output distribution box, waterproof, big lock, it is a rugged, low cost, low profile interconnection between central office and multi-dwelling units of FTTx application.

Its splice & adapter holder tray design allows PLC splitter, adapter holder and fiber storage, pigtail splicing of distribution/drop cables as needed.

### Features

- ❖ 2 rubber inlet input ports
- ❖ 16 FTTH cable output slots
- ❖ Capacity 16 pcs SC Sx adapters
- ❖ Suitable for wall and pole mounting
- ❖ Indoor & outdoor application
- ❖ IP65 rating

### Application

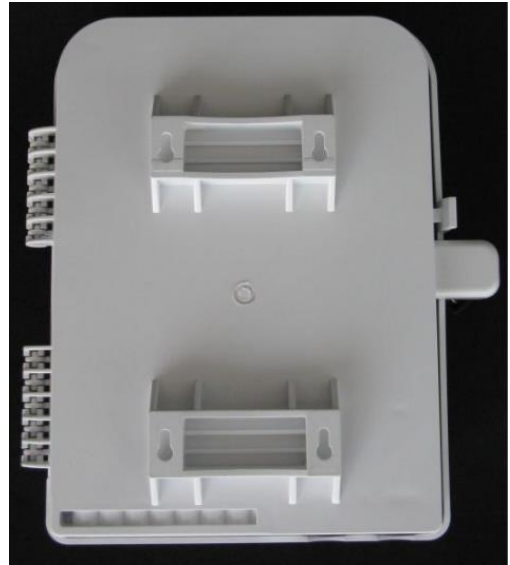
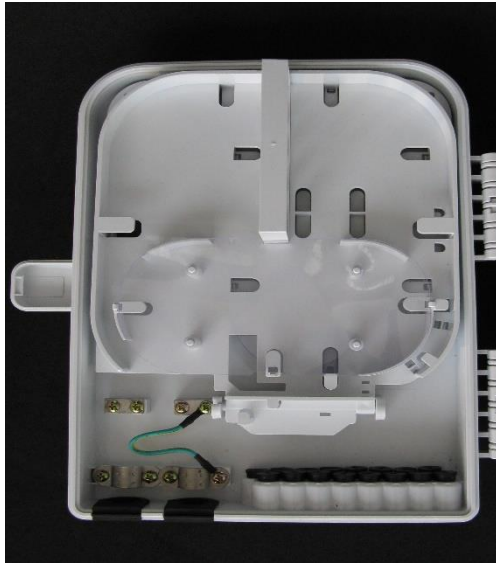
- ❖ FTTH, FTTB, FTTx
- ❖ Telecommunication Network
- ❖ Local Area Network
- ❖ CATV
- ❖ PON



### Technical Specification

| Model No.       | No. of entry ports                        | Max. Capacity | PLC Splitter | Max. No. of adapters | Dimension (L x W x H) |
|-----------------|-------------------------------------------|---------------|--------------|----------------------|-----------------------|
| <b>FDB-16A3</b> | In: 2 rubber inlet<br>out: 16 FTTH rubber | 16 fibers     | 1*16<br>2*8  | 16 SC Sx             | 290*260*100           |

## Pictures



## KST Ltd.